

Cemetery Location

For the NCA



Russell Field

The Situation:

- The National Cemetery Administration (NCA) is currently directed to build 11 new national cemeteries to meet the burial needs of veterans.
- After searching for months for available land north of Boston they have finally settled on the city of Salem, MA.
- A proposal is put forth at a city council meeting and city officials like the idea and negotiations start.

The Problem

- After months of negotiation the city officials go ahead with the plan and agree to sell some open space to the NCA for a new cemetery.
- But there are three requirements:
 - 1 The city of Salem refuses to allow currently surveyed open land to be subdivided.
 - 2 Based on the certain guidelines they have NCA is looking for a plot of land between 12 to 24 acres.
 - 3 Both want to find a secluded and forested parcel of land.

My Task

- As hired by the city of Salem for the NCA
 - Is to find an area of suitable land which meets both the requirements of the City of Salem and the needs of the National Cemetery Administration.



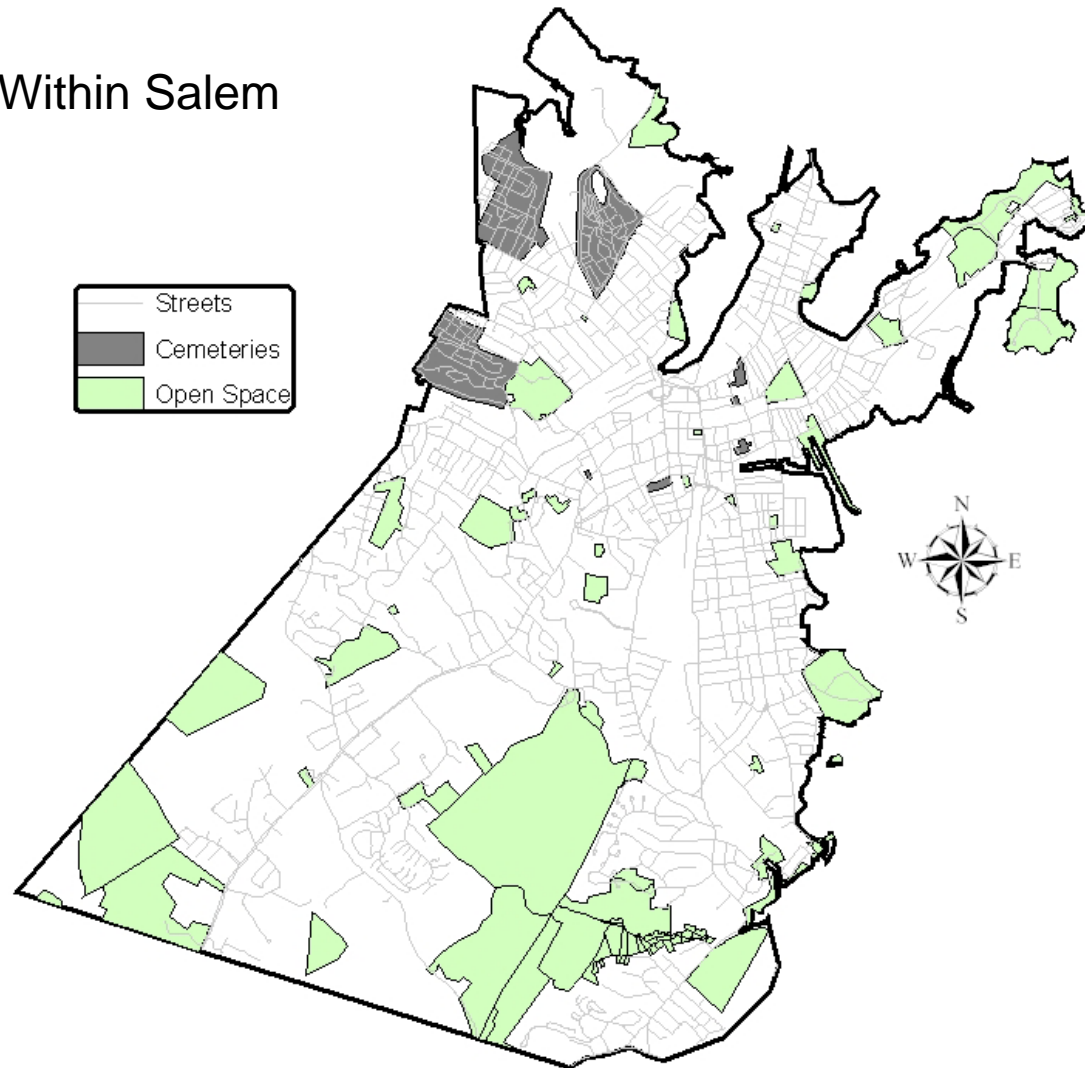
NCA Guidelines

- Property must be big enough to fit 4 to 8 sections of interment space (each section being 3 acres).
- The site must be big enough to provide sufficient burial space for 20 years.

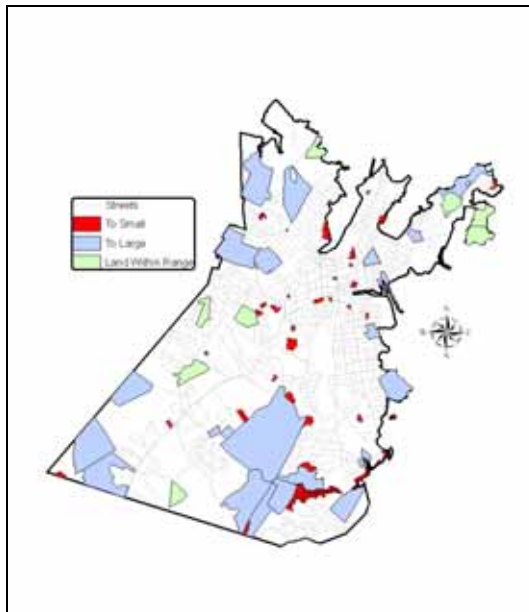
Salem Guidelines

- No existing city parks or occupied land can be sold
- Large plots of land cannot be subdivided.

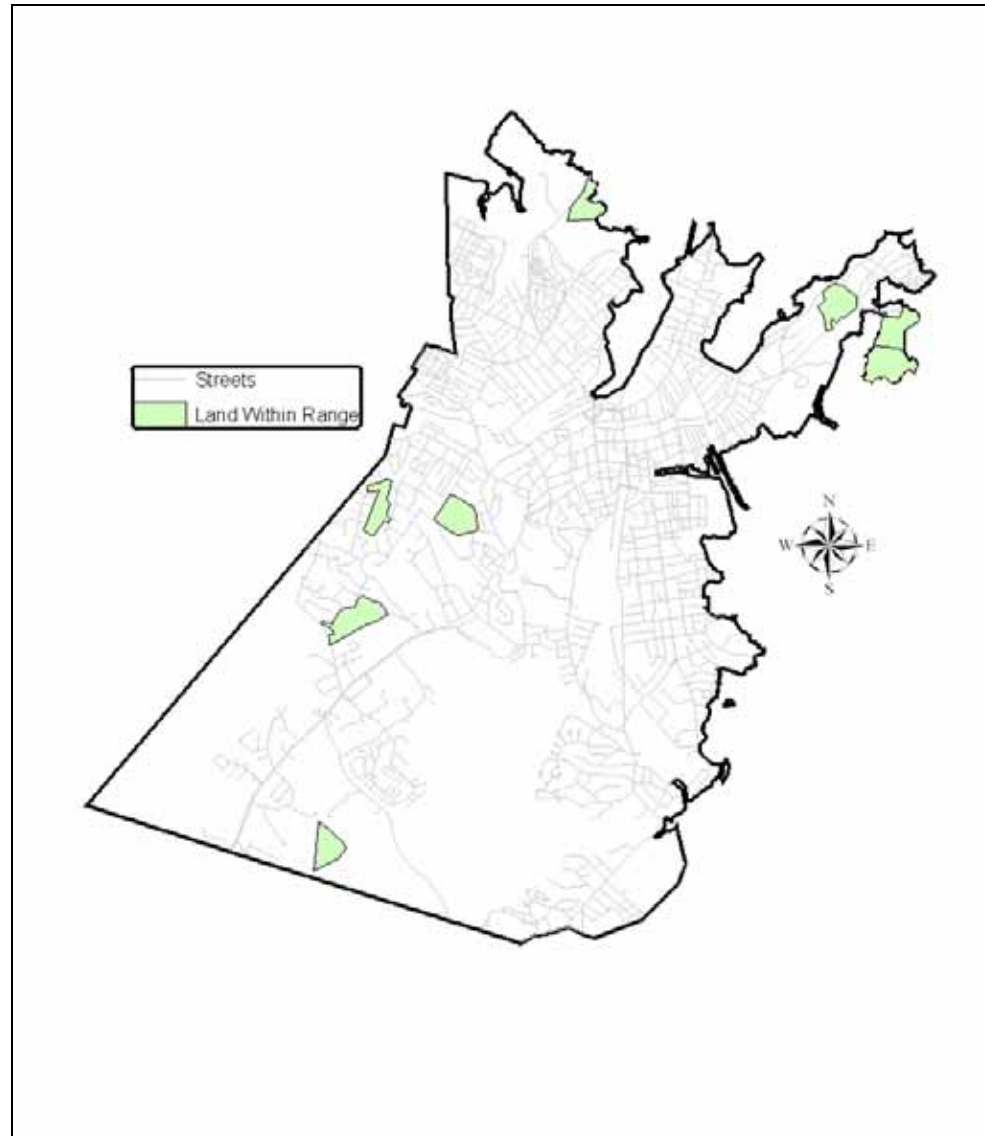
Open Space Within Salem



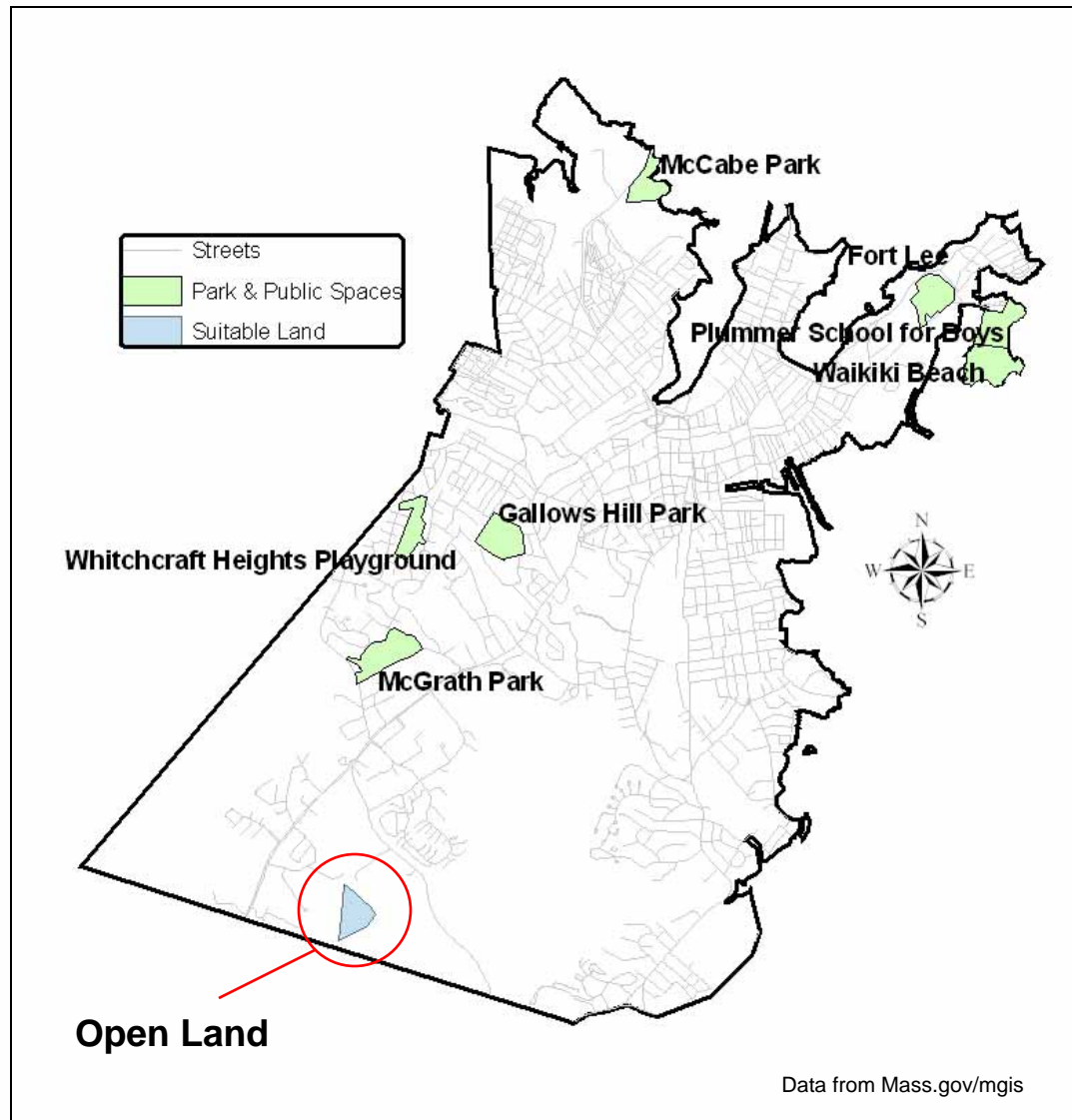
Data from Mass.gov/mgis

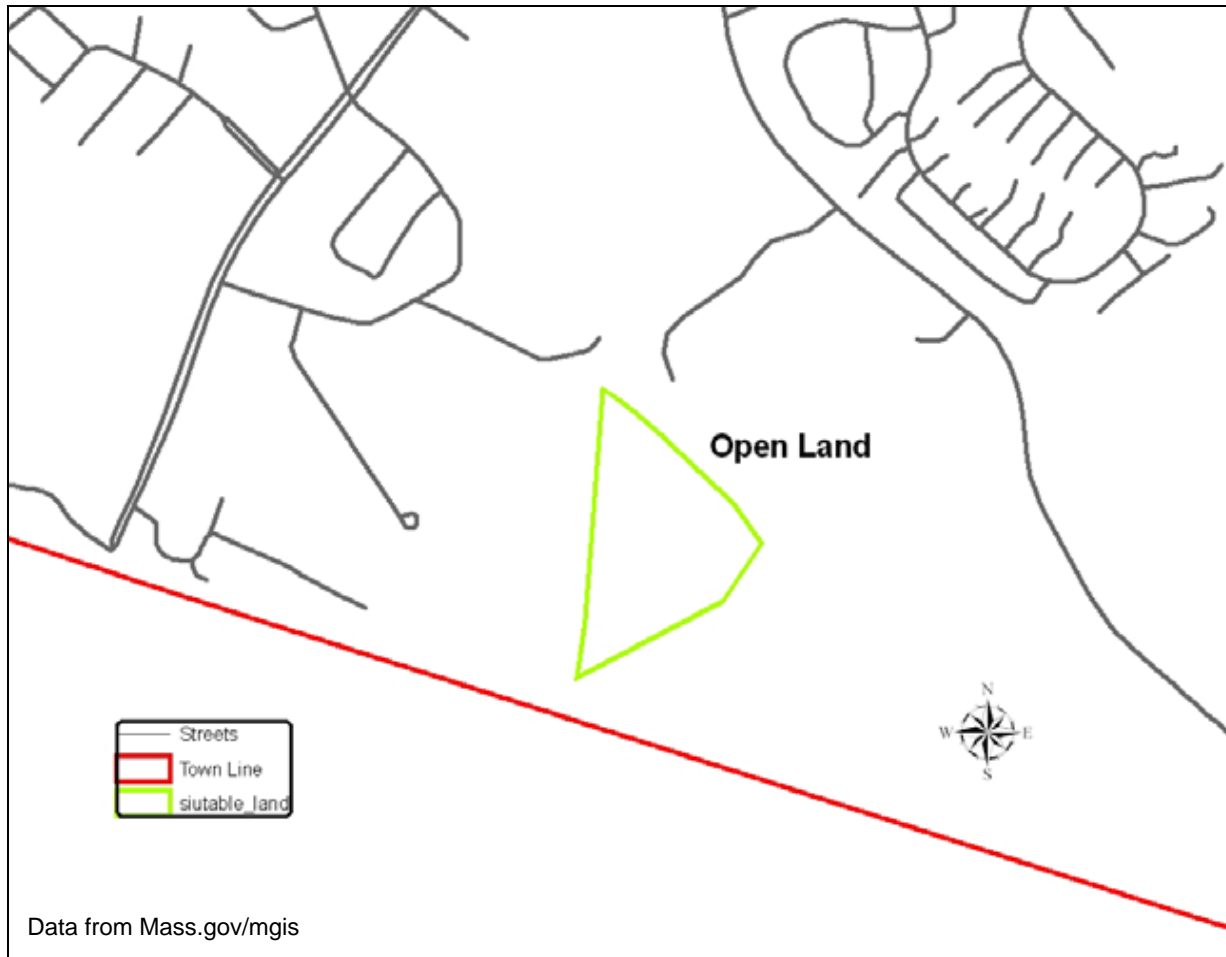


- After the areas too big or too small were removed the land Left was within range.
- Between 12 and 24 acres



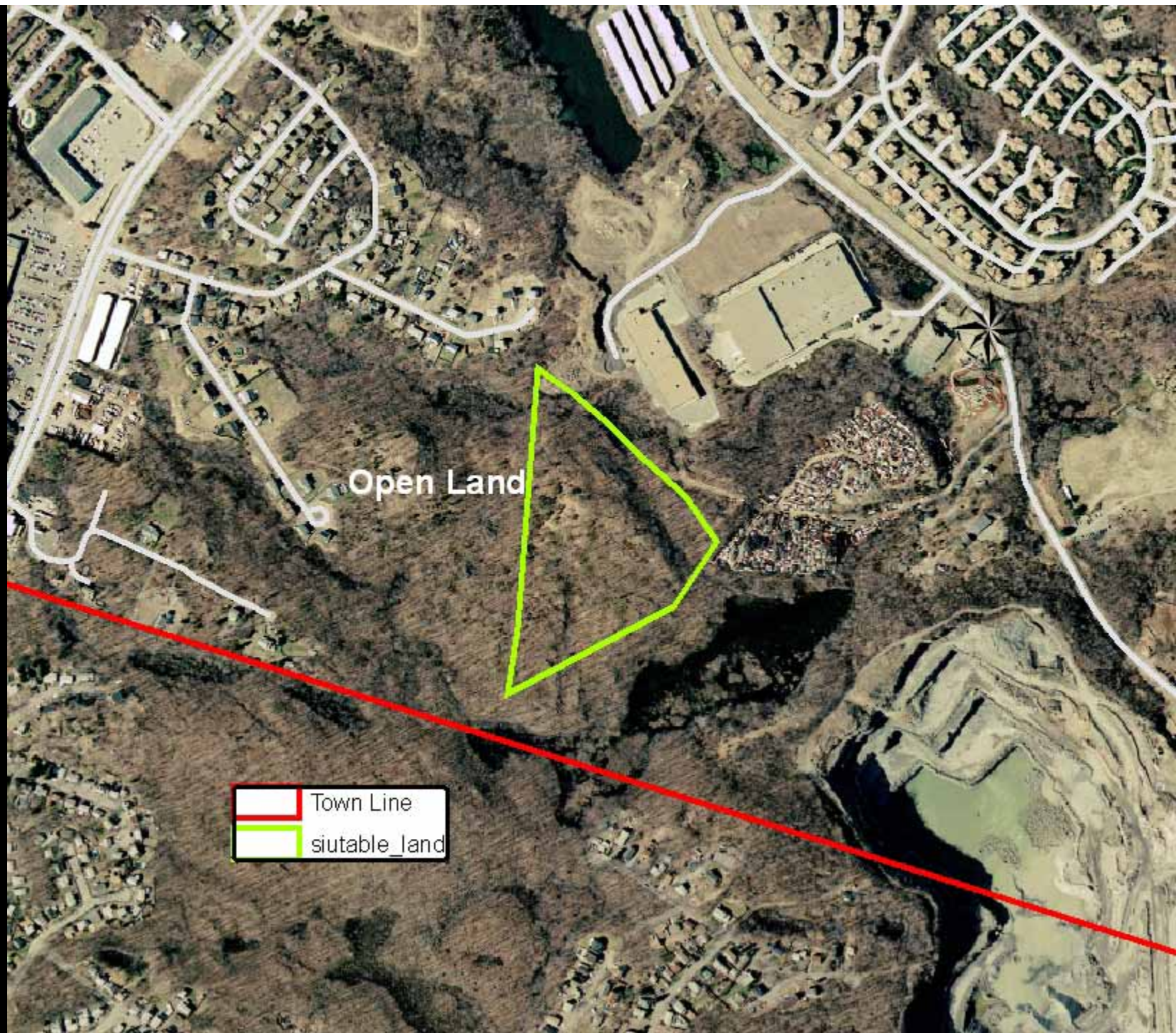
After all the city parks are removed only one plot of suitable land is left.





Total Area:
-14.49 acres

Capacity:
-12,620 gravesites



NCA Standard gravesite sizes are:

- 5' x 10'
- 43560 sq/ft = 1 acre
- 871 gravesite per acre

Open Space Lot Is:

- 14.49 acres
- x 871 sites=
- 12,620 total gravesites

Salem Death Rate is:

- 452.4 (1995)
- x 20 yrs=
- 9048 (assuming it stays relatively level)

Well within the 20 year capacity range