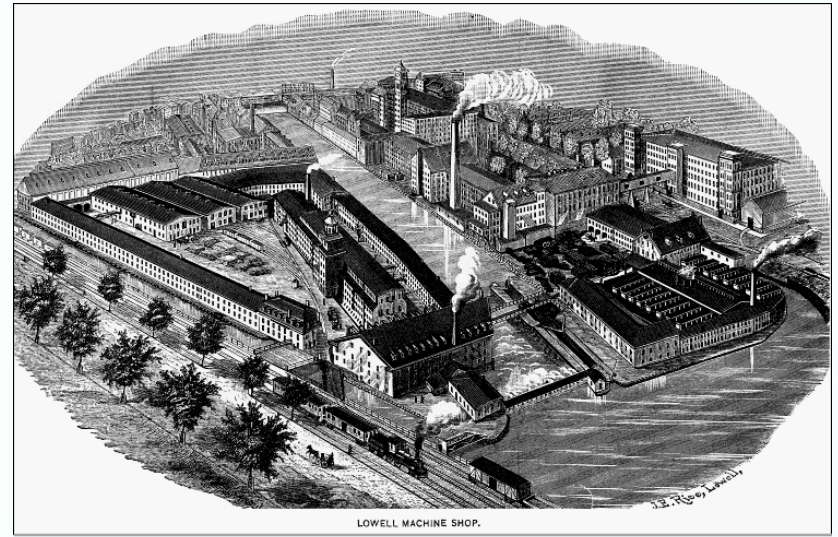
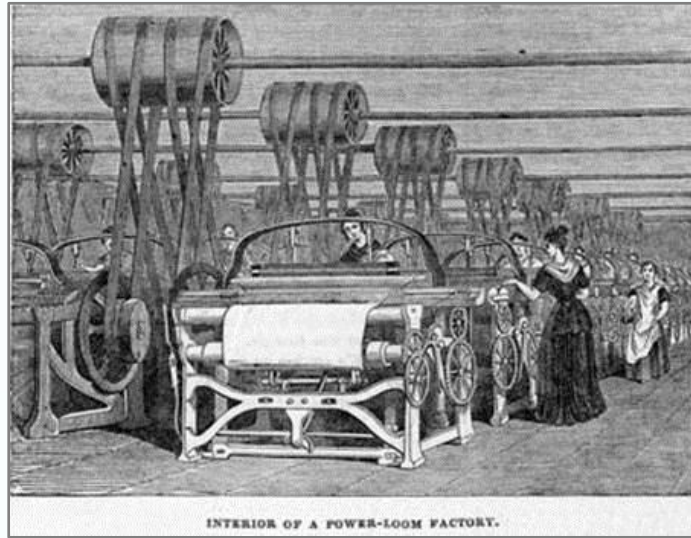


*Asian Voter Turnout in Lowell, MA:
An Analysis of Political
Empowerment*

GPH903
Liz Bonventre

Lowell, MA Then



- Symbol of the Industrial Revolution in America
- Powered by the Merrimac River
- Employed young women, Irish and Italians
- Birthplace of the American Labor Movement

Lowell, MA Now



- Multicultural city
- 20% of the population is Asian
- Cambodia opened up a third consulate

Objectives/Questions



- To update existing study using data from the 2010 census
- Use the Asian demographic as focus group
- Use the voter turnout rate as a measure of demographic empowerment
- Where has the Asian demographic moved in the last ten years?
- Has voter turnout for the Asian demographic improved?

Methodology

1. Convert demographic data by census tract to demographic data by voting precinct
2. Use the voting data provided by ONE Lowell to determine voting rate per year
3. Take voting rate data and demographic data to create charts for each year (2005-2009) displaying demographic percent population versus voter turnout by voting district
 - a. Include a trend-line and an R^2 value for each
4. Create 4 maps displaying the geography of each demographic by census tract and voting precinct
5. Create a table displaying R^2 values for each year and each demographic

Percent White By Precinct - Lowell, MA

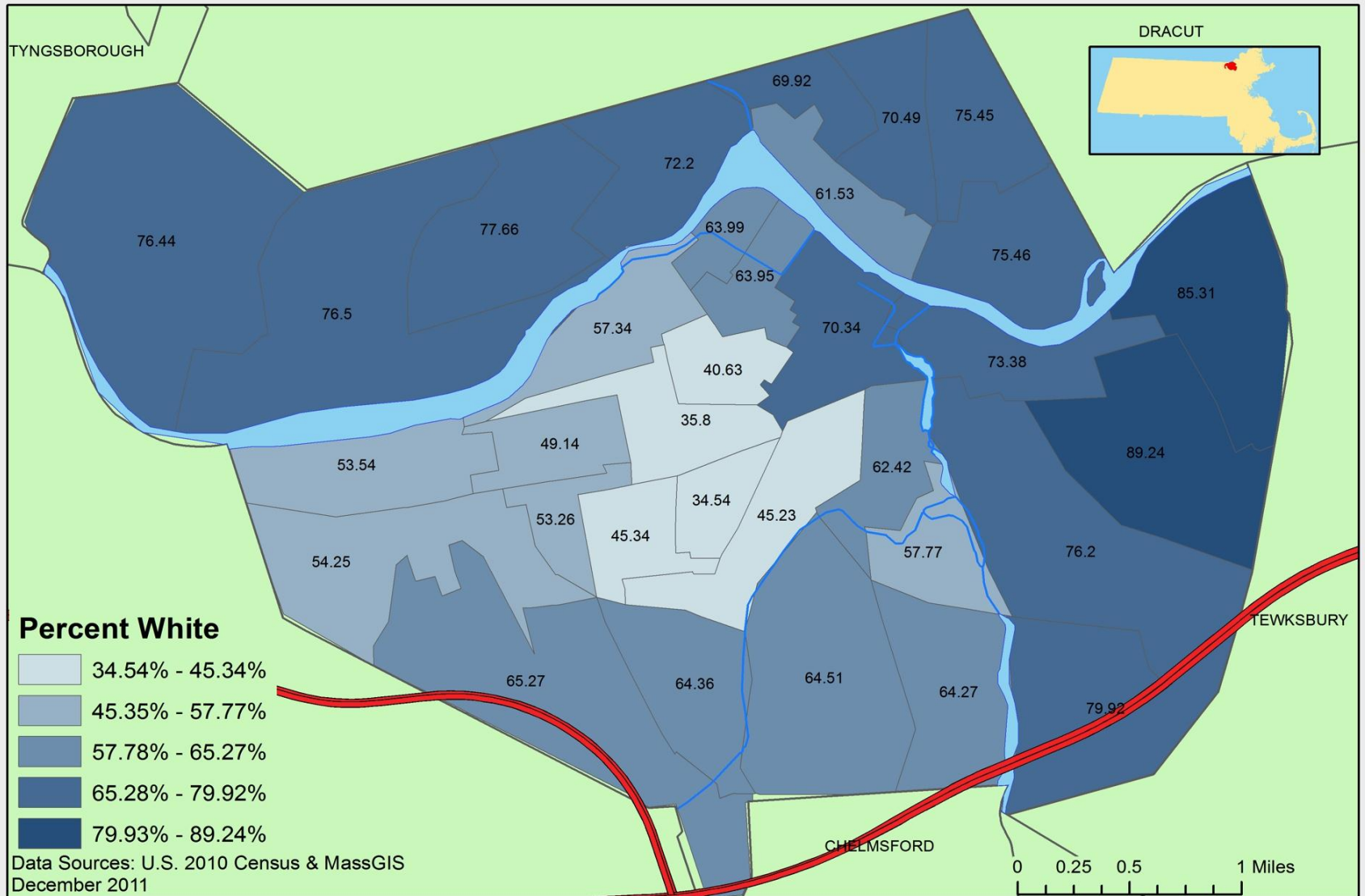


Figure 4

Percent White By Census Tract - Lowell, MA

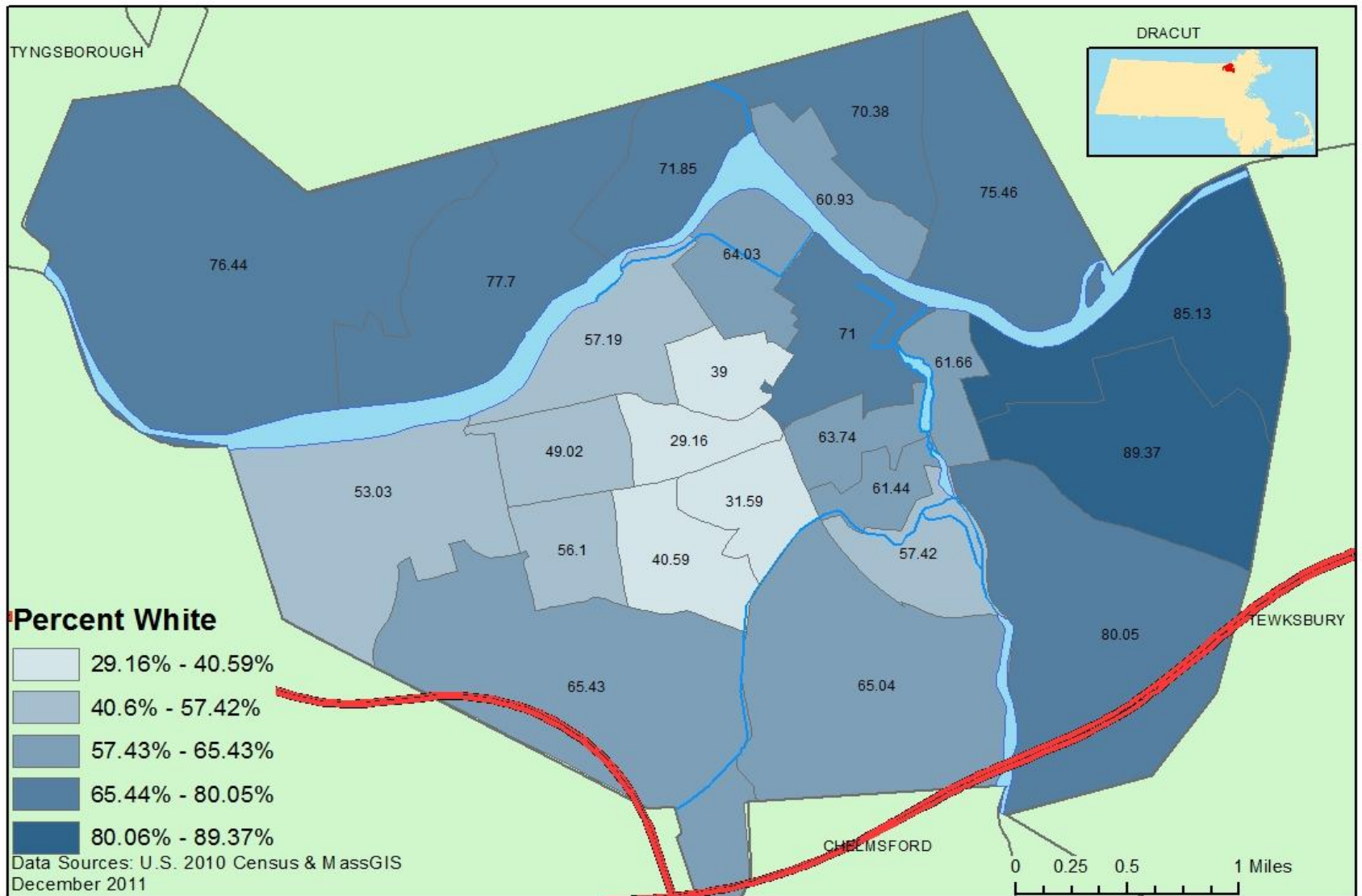


Figure 3

Percent Asian By Precinct - Lowell, MA

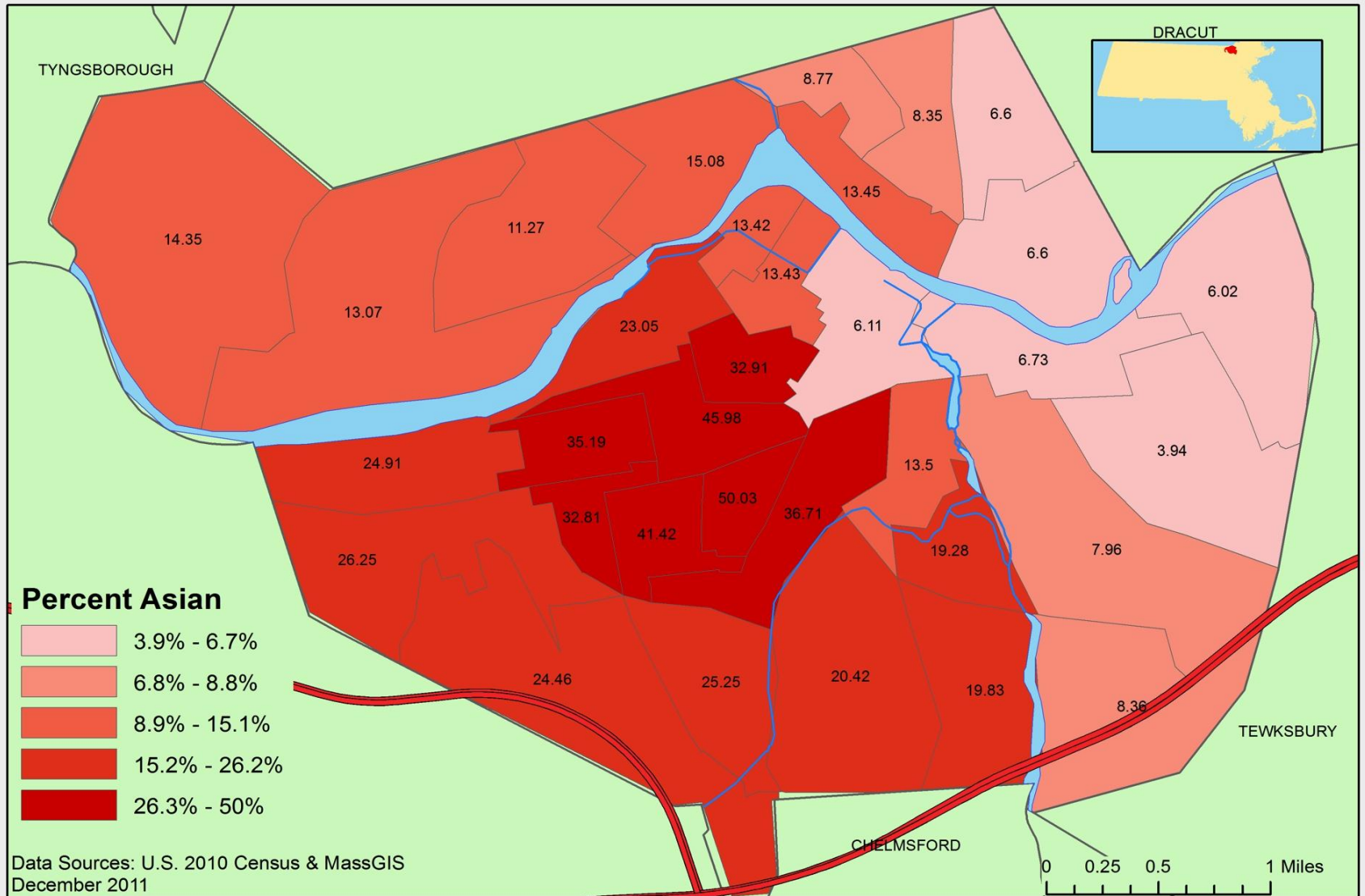


Figure 2

Percent Asian By Census Tract - Lowell, MA

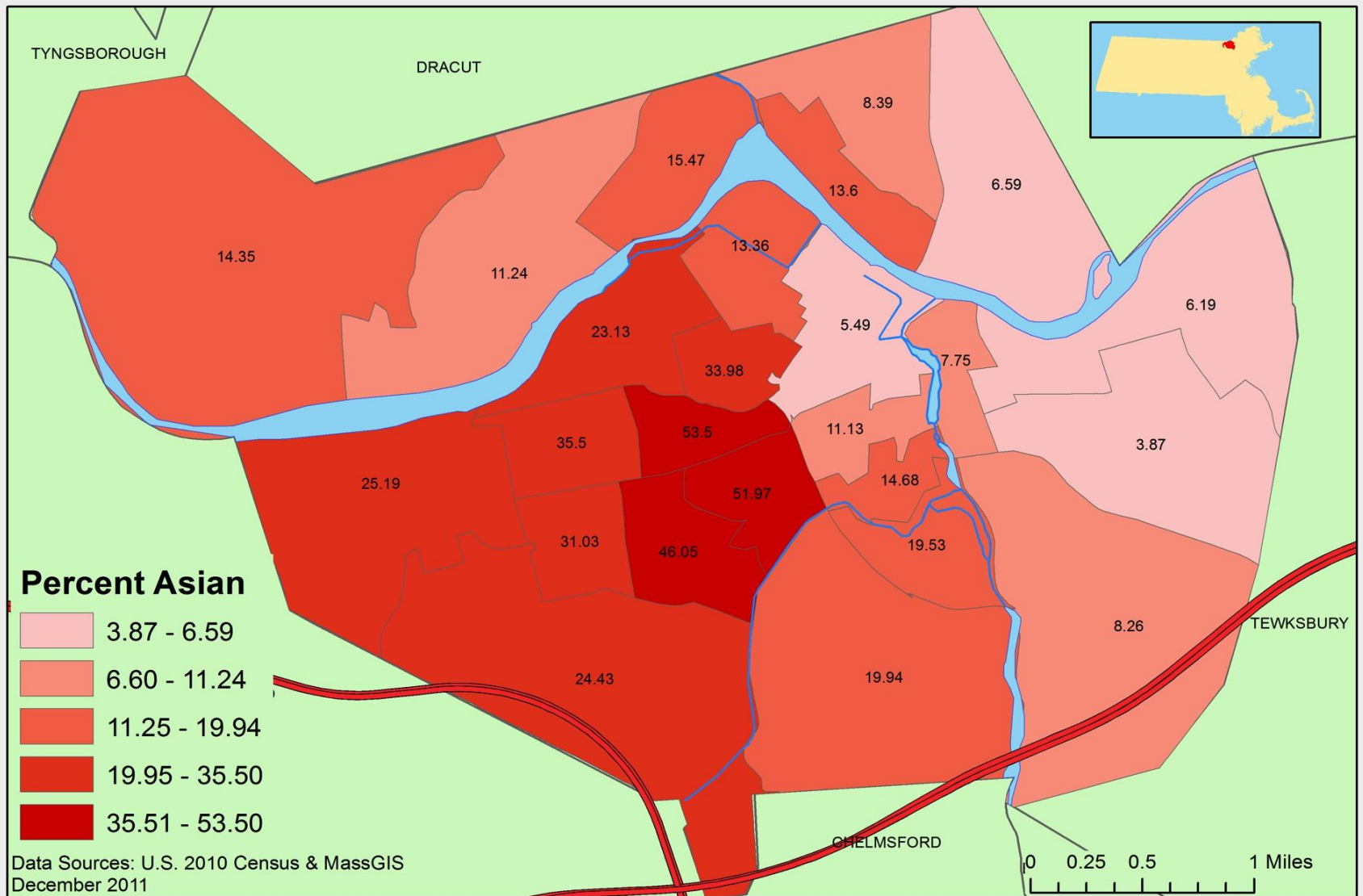


Figure 1

R² Value for Each Demographic by Year

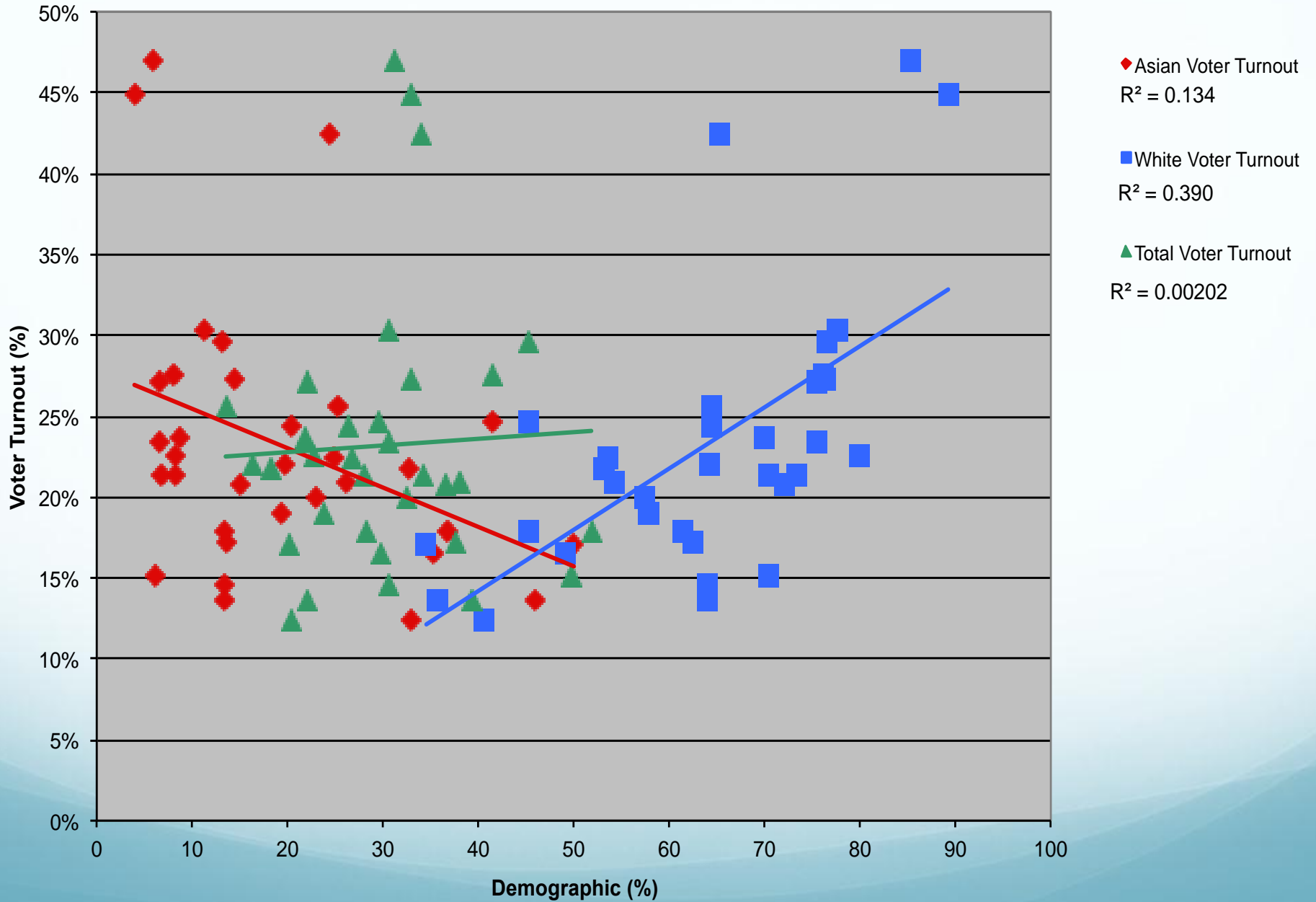
$$r^2 = b_{Y.X} b_{X.Y}$$

$$r^2 = r_{XY} \frac{S_Y}{S_X} r_{XY} \frac{S_X}{S_Y}$$

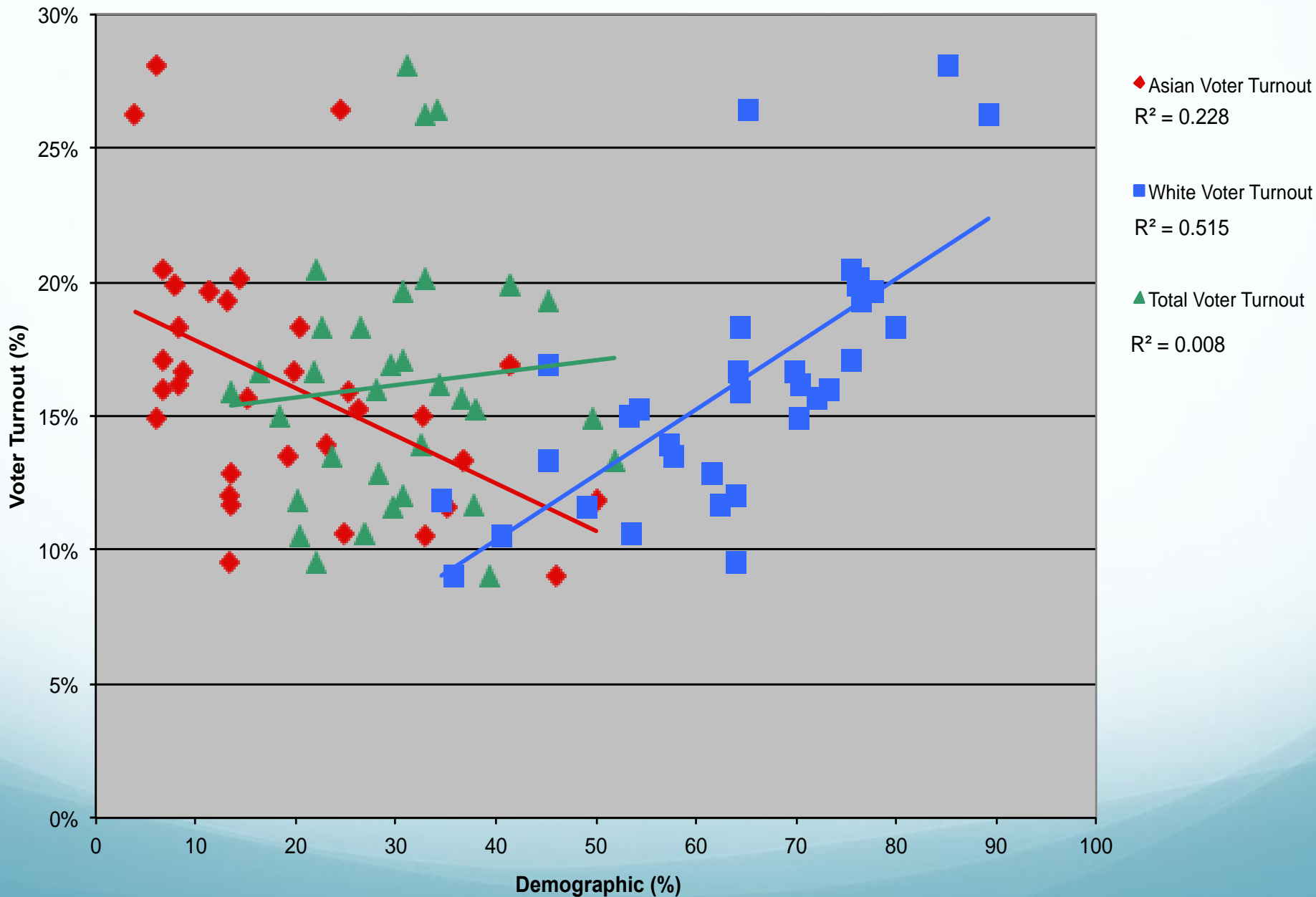
	2005	2006	2007	2008	2009
Asian	0.134	0.228	0.218	0.242	0.189
White	0.390	0.515	0.423	0.500	0.440
Total	0.002	0.008	0.005	0.020	0.003

- The R² value is used to quantify how much of the variation in voter turnout can be explained by the variation of the concentration for each demographic.
- Ranges from 1 to -1. The closer the number is to 1, the higher the correlation.

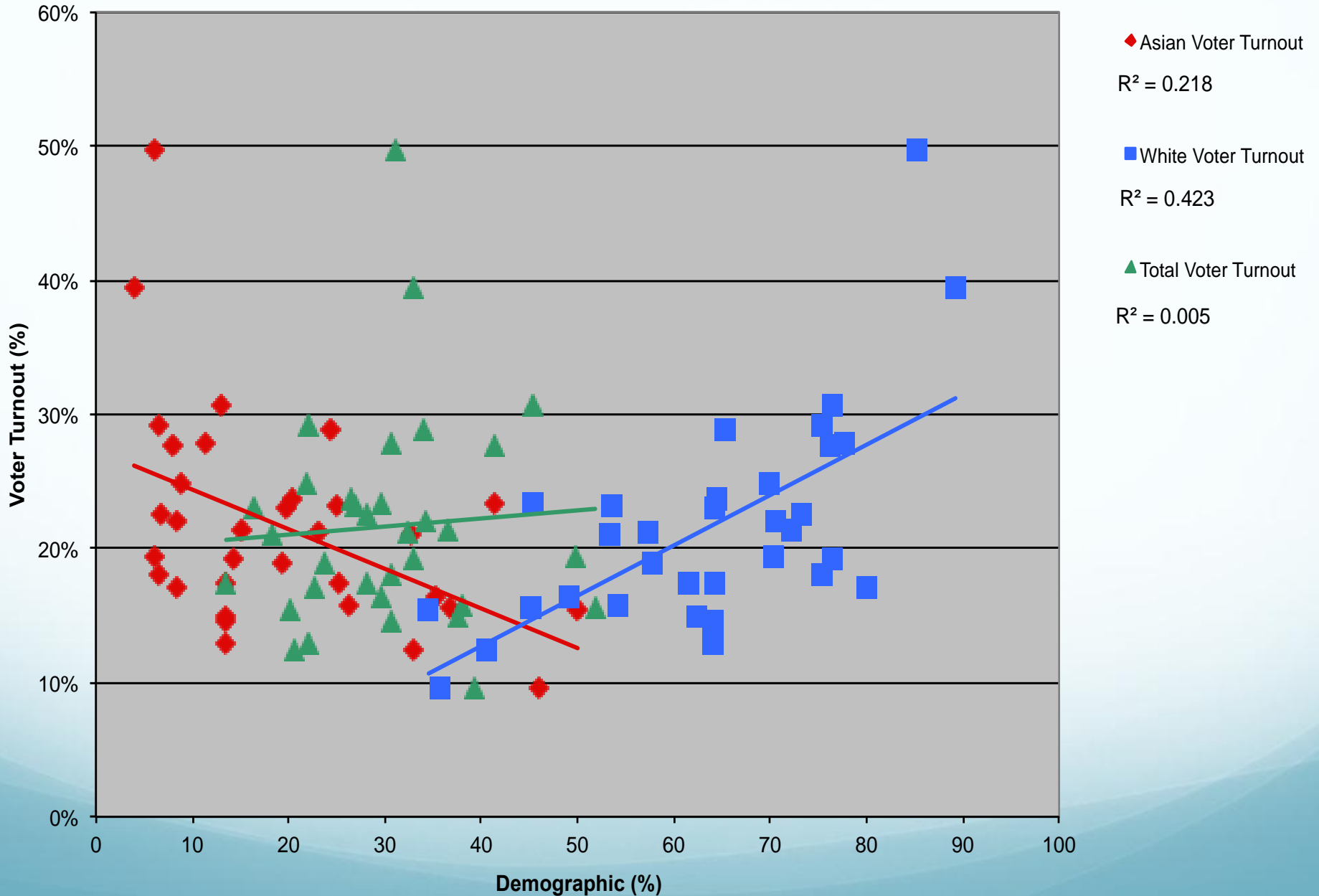
2005 Percent Demographic Population vs. Voter Turnout by Voting District



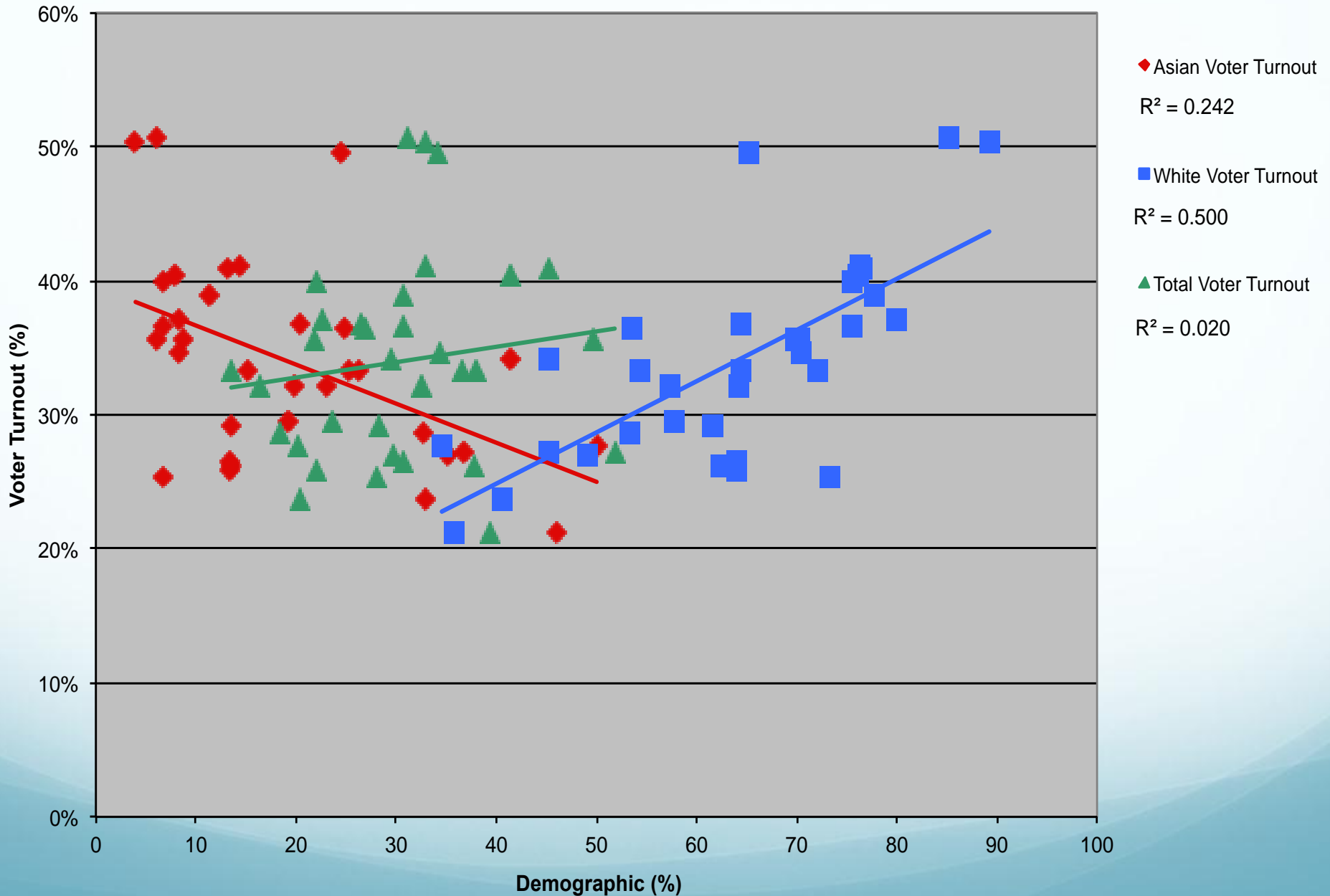
2006 Demographic Percent Population vs. Voter Turnout by Voting District



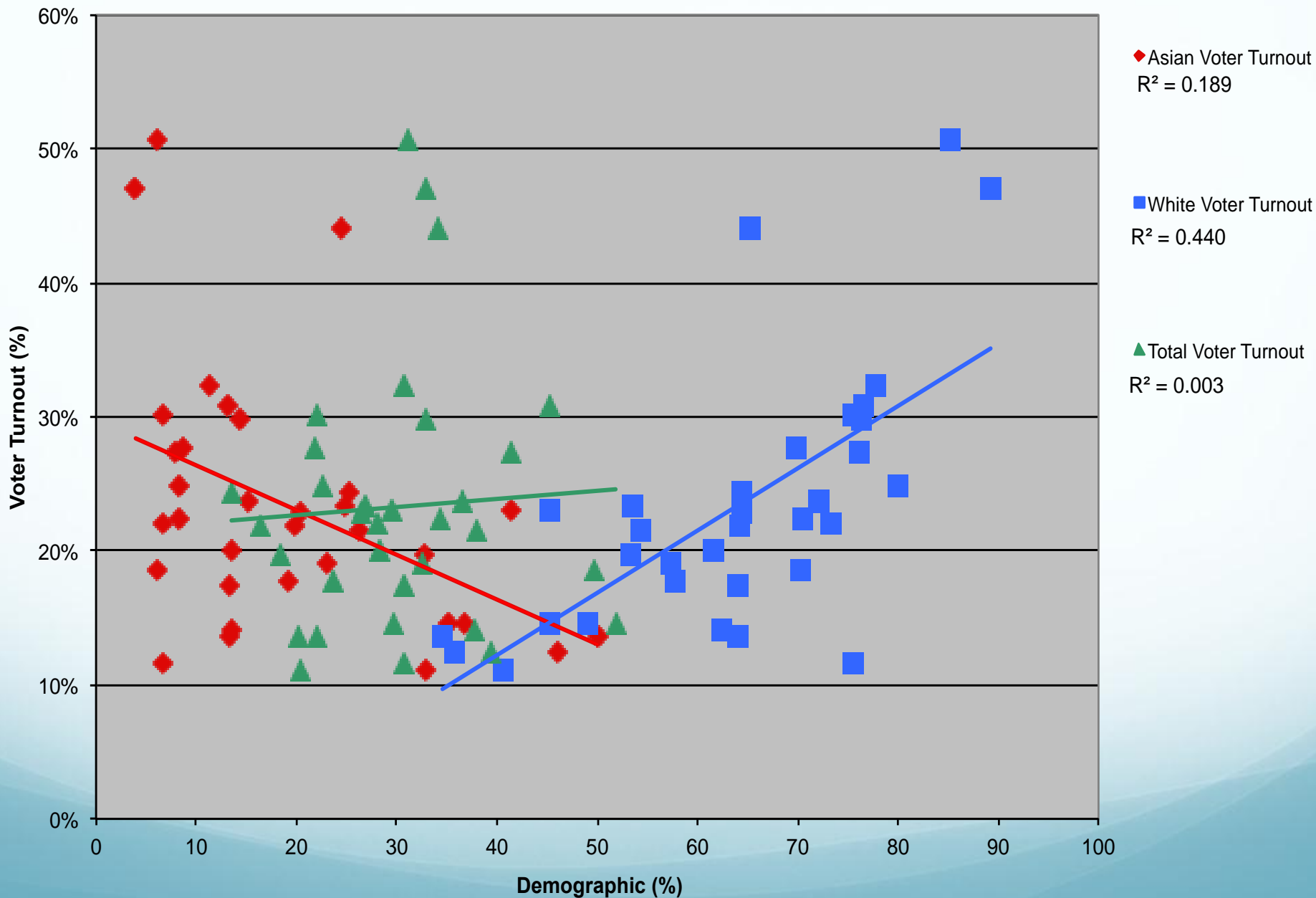
2007 Demographic Percent Population vs. Voter Turnout by Voting District



2008 Demographic Percent Population vs. Voter Turnout by Census Tract



2009 Demographic Percent Population vs. Voter Turnout by Voting District



Conclusion & Further Research

- Results are consistent with Prof. Luna's previous study
- Asian population remains less-empowered
- Display migratory and political participatory stagnation
- Research voter registration by demographic group
- Focus completely on local elections

Works Cited

- Cambodian, E. 2011. *Royal Embassy of Cambodia, Washington DC* 2011 [cited 2011].
- Census, U. S. 2010. Voting Districts for Massachusetts TIGER File.
- Davenport, T. C. 2010. Public Accountability and Political Participation: Effects of a Face-to-Face Feedback Intervention on Voter Turnout of Public Housing Residents. *Political Behavior* 32 (3):337-337-368.
- Eno, A. L. 1976. *Cotton was king : a history of Lowell, Massachusetts*. [Somersworth, N.H.]: New Hampshire Pub. Co.
- Jang, S.-j. 2009. Get Out on Behalf of Your Group: Electoral Participation of Latinos and Asian Americans. *Political Behavior* 31 (4):511-511-535.
- LowellONE. 2010. Voting Levels for the Elections 2000 to 2009.
- Office of Geographic and Environmental Information (MassGIS), C. o. M. E. O. o. E. a. E. A. 1998. Major Ponds and Major Streams.
- . 2009. Massachusetts Department of Transportation Major Routes.
- . 2011a. Census Tracts from the 2010 Census TIGER File.
- . 2011b. Community Boundaries (Towns) from Survey Points.
- Silka, L., and J. Tip. 1994. Empowering the silent ranks: The Southeast Asian experience. *American Journal of Community Psychology* 22 (4):497-520.
- Soss, J., and L. R. Jacobs. 2009. The Place of Inequality: Non-participation in the American Polity. *Political Science Quarterly* 124 (1):95-125.
- Tam Cho, W. K., J. G. Gimpel, and J. J. Dyck. 2006. Residential Concentration, Political Socialization, and Voter Turnout. *Journal of Politics* 68 (1):156-167.